

Name: \_\_\_\_\_

Date: \_\_\_\_\_

**Spelling Quiz for Category: colors**

Order all the letters and fill in the blank with the corrected word.

1)

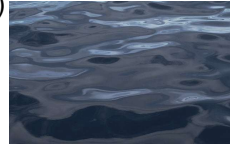


pink

oarasd

\_\_\_\_\_

2)



dark (m)

scouro

\_\_\_\_\_

3)



light yellow

aaíald mopirlllo

\_\_\_\_\_

4)



red

nrdecanao

\_\_\_\_\_

5)

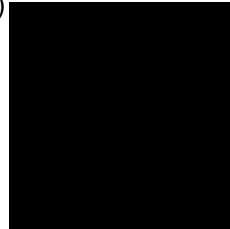


colorful

olidocor

\_\_\_\_\_

6)

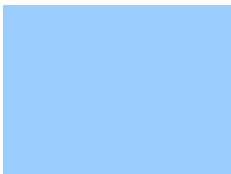


black

onger

\_\_\_\_\_

7)



light blue

elescet

\_\_\_\_\_

8)



fuchsia

usfcia

\_\_\_\_\_

9)



gold

roo

\_\_\_\_\_

10)



white

blncao

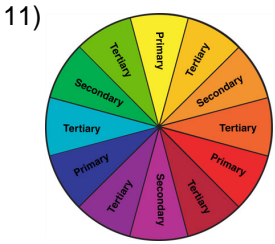
\_\_\_\_\_

Name: \_\_\_\_\_

Date: \_\_\_\_\_

**(continued) Spelling Quiz for Category: colors**

Order all the letters and fill in the blank with the corrected word.



**oriec lofrm**

maintains color

\_\_\_\_\_



**ablnco**

white

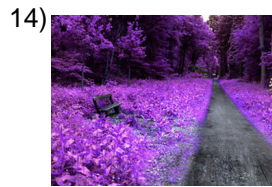
\_\_\_\_\_



**hocillnes**

gaudy, screaming colors

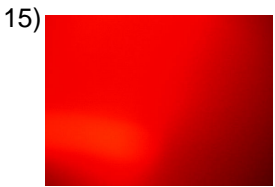
\_\_\_\_\_



**aomord**

purple

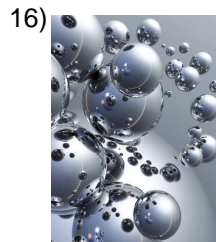
\_\_\_\_\_



**ojro**

red

\_\_\_\_\_



**ptoadle**

silver

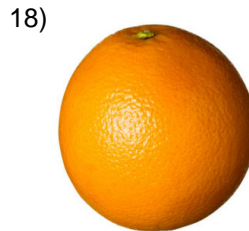
\_\_\_\_\_



**mariallo**

yellow

\_\_\_\_\_



**jarnnaa**

orange

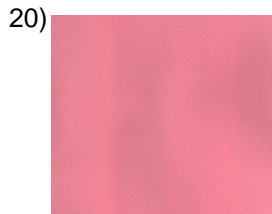
\_\_\_\_\_



**rsargie**

to become grey

\_\_\_\_\_



**roodsa**

pink

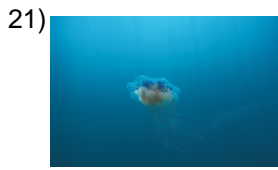
\_\_\_\_\_

Name: \_\_\_\_\_

Date: \_\_\_\_\_

**(continued) Spelling Quiz for Category: colors**

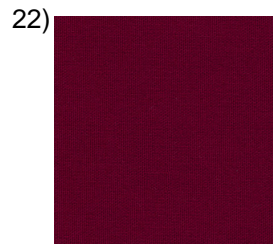
Order all the letters and fill in the blank with the corrected word.



cyan

**inca**

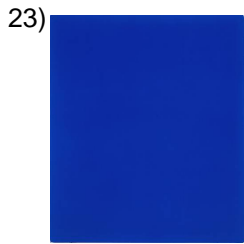
\_\_\_\_\_



burgundy

**obodr**

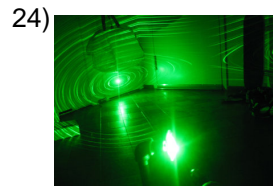
\_\_\_\_\_



blue

**zlau**

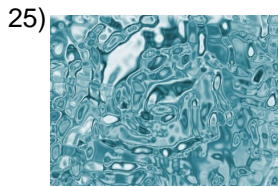
\_\_\_\_\_



green

**edevr**

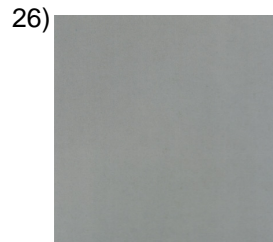
\_\_\_\_\_



light, clear

**arlco**

\_\_\_\_\_



gray

**gsir**

\_\_\_\_\_



grey

**rsgi**

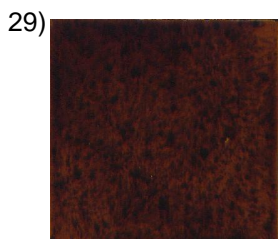
\_\_\_\_\_



brown (hair)

**ao fé,cacastñ**

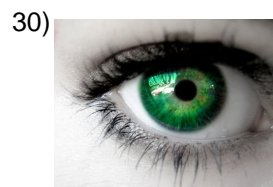
\_\_\_\_\_



brown

**rónma**

\_\_\_\_\_



green

**veder**

\_\_\_\_\_

Name: \_\_\_\_\_

Date: \_\_\_\_\_

**(continued) Spelling Quiz for Category: colors**

Order all the letters and fill in the blank with the corrected word.

31)



violet

**iletavo**

\_\_\_\_\_

32)



tenuous

**nuete**

\_\_\_\_\_

Name: \_\_\_\_\_

Date: \_\_\_\_\_

### **Answer Key for Worksheet 44bf0**

#### *Spelling Quiz starting on page 1*

1 = rosada , 2 = oscuro , 3 = amarillo pálido , 4 = encarnado , 5 = colorido , 6 = negro , 7 = celeste , 8 = fucsia , 9 = oro , 10 = blanco , 11 = color firme , 12 = blanco , 13 = chillones , 14 = morado , 15 = rojo , 16 = plateado , 17 = amarillo , 18 = naranja , 19 = grisear , 20 = rosado , 21 = cian , 22 = bordo , 23 = azul , 24 = verde , 25 = claro , 26 = gris , 27 = gris , 28 = café, castaño , 29 = marrón , 30 = verde , 31 = violeta , 32 = tenue